

FFA & 4-H SHOWMANSHIP

BEEF

DIVISION-103 4-H BEEF SHOWMANSHIP
DIVISION-104 FFA BEEF SHOWMANSHIP

DAIRY SHOWMANSHIP

DIVISION-105 4-H DAIRY BEEF SHOWMANSHIP
DIVISION-106 FFA DAIRY BEEF SHOWMANSHIP

SWINE

DIVISION-107 4-H SWINE SHOWMANSHIP
DIVISION-108 FFA SWINE SHOWMANSHIP

LAMBS

DIVISION-109 4-H LAMB SHOWMANSHIP
DIVISION-110 FFA LAMB SHOWMANSHIP

POULTRY

DIVISION-111 4-H POULTRY SHOWMANSHIP
DIVISION-112 FFA POULTRY SHOWMANSHIP

RABBITS

DIVISION-113 4-H RABBIT SHOWMANSHIP
DIVISION-114 FFA RABBIT SHOWMANSHIP

MARKET GOAT

DIVISION-115 4-H GOAT SHOWMANSHIP
DIVISION-116 FFA GOAT SHOWMANSHIP

CAVY

DIVISION-117 4-H CAVY SHOWMANSHIP
DIVISION-118 FFA CAVY SHOWMANSHIP

DAIRY SHOWMANSHIP

DIVISION-119 4-H DAIRY SHOWMANSHIP
DIVISION-120 FFA DAIRY SHOWMANSHIP

PYGMY GOATS SHOWMANSHIP

DIVISION-121 4H PYGMY GOAT SHOWMANSHIP
DIVISION-122 FFA PYGMY GOAT SHOWMANSHIP

DAIRY GOATS SHOWMANSHIP

DIVISION-123 4H DAIRY GOAT SHOWMANSHIP
DIVISION-124 FFA DAIRY GOAT SHOWMANSHIP

Est. 1972



~Floyd Q. Bryant~
Bryant's
CA LIC. 664-904

530-257-9454 ♦ 530-310-1068

PLUMBING • HEATING • CHIMNEYS

Residential ♦ Commercial ♦ Industrial

10% OFF
COUPON

YOUR NEXT SERVICE
GOOD THROUGH 9-1-10

P.O. Box 661 ♦ 1675 Riverside Dr. ♦ Susanville, CA 96130

FFA & 4-H MASTER SHOWMANSHIP & LAD & LASSIE LEAD



FFA & 4-H LARGE ANIMAL ROUND ROBIN

Local Divisions • No entry Fee
No cash award
Local judges may be used

FFA & 4-H Advanced Showmanship winners in Beef, Sheep, Swine, Dairy, Goat & Market Goat. Contest will be held July 24, 2010 following the Goat Show in the Judging Pavilion.

NEW—If the 1st place winner elects not to participate, 2nd place winner becomes eligible & will then earn the first place winnings for that species. Livestock Superintendent must be notified by 5 pm following the day of the species show.

DIVISION 125—FFA LARGE ANIMAL MASTER SHOWMANSHIP

CLASS

1 Round Robin

DIVISION 126—4-H LARGE ANIMAL MASTER SHOWMANSHIP

CLASS

1 Round Robin

FFA & 4-H SMALL ANIMAL ROUND ROBIN

Local Divisions • No entry Fee
No cash award
Local judges may be used

FFA & 4-H Advanced Showmanship winners in Rabbits, Poultry, Pygmy Goats, & Dogs will be eligible. Contest will be held 5:00pm, July 23, 2010 in the Rabbit & Poultry Barn.

If the 1st place winner elects not to participate, 2nd place winner becomes eligible & will then win the 1st place winnings for that species. Livestock Superintendent must be notified of the species show.

SMALL ANIMAL MASTER SHOWMANSHIP

Friday July 24, 5pm or immediately following the Rabbit Show if the Rabbit Show extends past 5:00pm.

DIVISION 127—FFA SMALL ANIMAL MASTER SHOWMANSHIP

CLASS

1 Small Animal Round Robin

DIVISION 128—4-H SMALL ANIMAL MASTER SHOWMANSHIP CLASS

1 Small Animal Round Robin

LAD & LASSIE LEAD

Local Division
Local Judges maybe used
Danish System of Judging
No entry fee • No cash

Contest is open to FFA, 4-H & Jr. Contestants Ages 9–19. The sheep must be conditioned, fitted & trained to show at halter. Participants must furnish their own outfits that must contain a minimum of 70% wool. Sheep may be borrowed from exhibitors on the fairgrounds. Entries & commentary must be delivered to the Livestock Office no later than Thursday, July 22 at noon. Contest will be held at 3pm on the Sheep lawn area.

DIVISION 129—LAD & LASSIE LEAD CLASS

1 Junior Garment & Lamb Costume—Ages 7-13 years.
2 Senior Garment & Lamb Costume—Ages 14 & over.

*****If you win either Round Robin Event, or Lad & Lassie you are eligible to go on to State Fair. Contact the Fair Office for State Form Entries.*****

BROADCASTING LIVE

93FM SIERRA'S BEST COUNTRY

At The Lassen County Fair!

25th year

Colgate COUNTRY SHOWDOWN
AMERICA'S LARGEST COUNTRY MUSIC TALENT SEARCH

Thursday, July 15th 7:00pm in the Grandstands

4-H & FFA REPORTS AT
www.theradionetwork.com

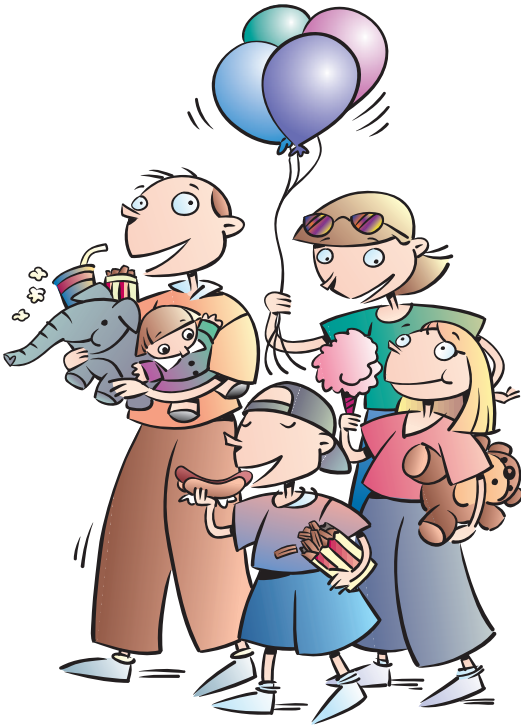
The GeoExchange System...

...THE BENEFITS OF AN ENERGY EFFICIENT,
ENVIRONMENTALLY FRIENDLY SYSTEM!



GeoExchange uses the earth's constant temperature to provide warmth in the winter and cooling in the summer at a fraction of the price of traditional.

Lassen Municipal Utility District offers rebates to customers who install GeoExchange Systems. To find out if GeoExchange is right for you, call LMUD's Energy Services Manager at 530-257-4174.



**STILL EXHIBIT
ENTRY FEE:
\$1.00 UNLESS
OTHERWISE
STATED.**

**MAXIMUM FEE:
\$10.00
(EVEN IF YOU HAVE
MORE THAN
10 ENTRIES)**

CA 287285 • CA Lic.# 864501

Well
Drilling
New
Systems
Pump
Repair
Filter
Systems



Test
Pumping
Well
Cleaning
Personalized
Service

530-254-6656

Fax# 530-254-6662

2 Trucks & 2 Pump Techs ♦ www.dtpumps.com ♦ Email: info@dtpumps.com
Over 20 Yrs. Experience ♦ 715-310 Lake Leavitt ♦ Susanville, CA 96130

Susanville
Susan River Realty
"Your Real Estate Expert"

170 Russell, Suite A • Susanville, CA 96130
Email: mags8710@yahoo.com

LEANN SMITH, BROKER/OWNER

CA. Broker's Lic. #01263375

530-257-8344

LeAnn Smith, Broker/Owner ❖ Bing Miller, Broker/Associate
Cathy Maxey, Broker/Associate ❖ Brenda Witt, Agent ❖ Dawn Myers, Agent



Chester/Lake Almanor

Mountain Properties

181 Main Street ❖ Chester, CA 96020

530-257-8344

Email: info@mtn-properties.com

STILL EXHIBIT ENTRY FEE: \$1.00 UNLESS OTHERWISE STATED. MAXIMUM FEE: \$10 (EVEN IF YOU HAVE MORE THAN 10 ENTRIES)

FEATURE EXHIBITS

Entry Forms Due: June 18

Exhibits Accepted: July 17, 9 am–5 pm

Exhibits Judged: July 19, 9 am

Exhibits Released: July 26

American System of Judging

Limit—1 Entry per Exhibitor per Class

\$15.00 Entry Fee

PREMIUMS OFFERED:

1st	2nd	3rd
\$100	\$75	\$50

COUNTY, COMMUNITY & ORGANIZATIONAL EXHIBITS

Feature exhibits shall be limited to one entry by county, community or organization or noncommercial entry in this **Division**.

- ❖ Exhibits must be maintained for the duration of the fair.
- ❖ Front 50% of the side divider must not be more than 3' high. Full space must be utilized.
- ❖ Booth to be designed within one year of the opening day of the fair.
- ❖ Standard booth size is 10' x10', back 8' high, side 3' high. Space to be marked out by fair staff. Any booth exceeding booth space will be disqualified.
- ❖ All material used in booth decorations must be flameproof.

DIVISION 130—SPECIAL ORGANIZATIONAL BOOTHS

These booths must be sponsored by a club or organization. Exhibits should display any industrial, educational or organizational activity of this area in such a manner as to most attractively inform the public of the value, desirability & interest to the consumer, producer & the community will be found in the subject being featured.

CLASS

- 1 Fair Theme

FAMILY FARM

Entry Forms Due: June 18

Exhibits Accepted: July 17, 9 am–5 pm

Exhibits Judged: July 19, 9 am

Exhibits Released: July 26

Entry Fee: \$15 per entry

American System of Judging

Limit—1 entry per exhibitor per class

PREMIUMS OFFERED:

1st	2nd	3rd
\$100	\$75	\$50

All products must have been produced or made during the last year by the exhibiting family. This is an opportunity to show the diversity of skills your family has. You may want to

include such items as knitting, sewing, needlework, crops, home-canned or baked goods, information on animals raised, welding, etc. Exhibitor space 6'x6'.

DIVISION 131—FAMILY FARM CLASS

- 1 Family Farm

FLEECE EXHIBITS

Entry Forms Due: June 18

Exhibits Accepted: July 17, 9 am–5 pm

Exhibits received at the Livestock Office

Exhibits Judged: July 19

Exhibits Released: July 26

American System of Judging

\$1.00 Entry Fee

Purpose:

- ❖ To encourage the production of better animal fiber.
- ❖ To stimulate interest in the proper preparation of fiber for market.
- ❖ To determine the best fleece entered in each class.
- ❖ To help inform the public of the uses & value of animal fiber as textile fiber.
- ❖ All material used in booth decorations must be flameproof.

ELIGIBILITY OF CONTEST & FLEECES

Requirements for each fleece:

- ❖ Must have been shorn after August 2008.
- ❖ Must represent not more than 12 months growth, except in the case of yearling fleeces, 16 months growth will be allowed.
- ❖ Skirting of fleeces is encouraged.

Qualifications:

- Any Wool fleeces entered in competition shall be discriminated against if:
- ❖ Fleece shows any paint or tar brands (except soluble tar branding fluids).
 - ❖ Fleece shows excessive dung lock or tags.
 - ❖ Fleece is discolored by excessive moisture.

PREMIUMS OFFERED:

1st	2nd	3rd
\$4	\$3	\$2

Best of Show fleece awarded to Open & Junior.

DIVISION 132—OPEN WOOL SHOW—WHITE CLASS

- 1 Fine Wool
- 2 Medium Wool

DIVISION 133—OPEN WOOL SHOW—NATURAL COLORED CLASS

- 1 Fine Wool
- 2 Medium Wool
- 3 Long Wool

FLEECE EXHIBITS CONTINUED

Entry Forms Due: June 18
Exhibits Accepted: July 17, 9am-5pm
Exhibits received at the Livestock Office
Exhibits Judged: July 19
Exhibits Released: July 26
American System of Judging
\$1.00 Entry Fee

DIVISION 134-OPEN ALPACA FLEECE SHOW CLASS

- 1 Suri Fleece
- 2 Huacaya Fleece

DIVISION 135-JUNIOR WOOL SHOW-WHITE CLASS

- 1 Fine Wool
- 2 Medium Wool

DIVISION 136-JUNIOR WOOL SHOW-N/C CLASS

- 1 Fine Wool
- 2 Medium Wool
- 3 Long Wool

DIVISION 137-JUNIOR ALPACA FLEECE SHOW CLASS

- 1 Suri Fleece
- 2 Huacaya Fleece

DIVISION 138-JUNIOR ANGORA FLEECE SHOW CLASS

- 1 White Fleece
- 2 Colored Fleece



Jean M. Loosemore
Mortgage Loan Officer

530.252.5626



1855 B Main St. • Susanville, CA 96130



**CAL-SIERRA
TITLE COMPANY**

608 COURT ST.
SUSANVILLE, CA

(OFFICE) 530.257.8866
(FAX) 530.257.8846

20 CRESCENT • QUINCY, CA
328 MAIN, STE. B • CHESTER, CA
330 BONTA, STE. 6 • BLAIRSDEN, CA

SCARECROWS—LOCAL DIVISIONS

ENTRY FORMS DUE: JUNE 18

EXHIBITS ACCEPTED: JULY 17, 9am–5pm

EXHIBITS JUDGED: JULY 19, 9am

EXHIBITS RELEASED: JULY 26

ENTRY FEE: \$5 PER ENTRY PER CLASS

EXHIBITORS WILL HAVE A 6'X6' SPACE

LIMIT—1 ENTRY PER EXHIBITOR PER CLASS

PREMIUMS OFFERED:

1ST	2ND	3RD
\$25	\$20	\$15

DIVISION 139

SCARECROW CLASS

- 1 INDIVIDUAL
- 2 GROUP OR ORGANIZATION
- 3 FAMILY



AGRICULTURE

Local Division

Entry Forms Due: July 2

Exhibits Accepted: July 21, 7–9am

Exhibits Judged: July 21, 9am

Exhibits Released: July 26

American System of Judging

Limit—4 Entries per Exhibitor per Class

Entry Fee—\$1.00

1. The quality desired in agricultural & horticultural products is the quality that brings the best financial return in the commercial market. Such exhibits must be at least equal in maturity to that ripeness required by Section 42513 of the California Agricultural Code in order to be considered for premium awards.
2. Mature means having reached that stage of ripeness which will ensure palatability, after the removal of the product from the tree, vine, or plant.
3. Over ripe means having an advanced state of maturity which causes the product to be undesirable for human consumption in a fresh state.
4. Exhibitors must furnish their own containers for exhibits.
5. Topped vegetables should have tops cut 1 to 2. Bunched vegetables should have sufficient tops to be tied together.
6. Exhibitors must make arrangements to replace all fruit & vegetables which deteriorate during the duration of the fair.

PREMIUMS OFFERED:

1st	2nd	3rd
\$4	\$3	\$2

Unless otherwise stated, the type of vegetable desired for exhibit will be uniform commercial grade rather than overgrown. Monstrosities will not be considered for premium awards.

DIVISION 140—FRUIT & POD VEGETABLES

CLASS

- 1 Beans, Snap, Green, 12 pods
- 2 Beans, Other, 12 pods
- 3 Peas, Any, 12 pods
- 4 Peppers, Bell, Green, 4
- 5 Peppers, Chilleano, 5
- 6 Peppers, Any, 5
- 7 Tomatoes, Green, 5
- 8 Tomatoes, Red, Ripe, 5
- 9 Tomatoes, Cherry, 10
- 10 Tomatoes, All Others, 5
- 11 Other Fruit & Pod Vegetables, Specify

DIVISION 141—ROOT, BULB, & TUBER VEGETABLES

CLASS

- 1 Beets, Garden, Topped, 1 bunch
- 2 Carrots, Long, Topped, 1 bunch
- 3 Carrots, Short, Topped, 1 bunch
- 4 Carrots, Short, Blunt, 1 bunch
- 5 Carrots, Other, Specify, 1 bunch
- 6 Garlic, 6
- 7 Onions, Flat, 5
- 8 Onions, Globe, 5
- 9 Onions, Green, 5
- 10 Onions, Other, Specify, 5
- 11 Potatoes, Red, 5
- 12 Potatoes, White, 5
- 13 Potatoes, Other, 5
- 14 Radishes, Red, 2 bunches, 5 each
- 15 Radishes, White, 2 bunches, 5 each
- 16 Other Roots, Bulb & Tuber Vegetables, Specify

DIVISION 142—LEAF & STEM VEGETABLES

CLASS

- 1 Cabbage, 1 head, specify
- 2 Chard, Swiss, 1 bunch
- 3 Corn, Sweet, Yellow, 5 ears
- 4 Corn, Sweet, White, 5 ears
- 5 Corn, Other, 5 ears, Specify
- 6 Lettuce, Leaf, 2 plants
- 7 Lettuce, Other, 1 head
- 8 Rhubarb, 6 stalks
- 9 Other Leafy & Stem Vegetable, Specify

DIVISION 143—VINE CROP VEGETABLES

CLASS

- 1 Cucumbers, Slicing, Green, 3
- 2 Cucumbers, Pickling, 6
- 3 Cucumbers, Any Other, Specify, 3
- 4 Melons, Any, Specify, 1
- 5 Squash, Zucchini, 3
- 6 Squash, Yellow, Straight Neck, Specify, 3
- 7 Squash, Any Other, Specify, 3
- 8 Any Other Vine Crop, Specify