

# Livestock/Horse Red Tag Policy Exhibitors

**PURPOSE:** To ensure that livestock exhibited at the Lassen County Fair are cared for & treated in a humane & ethical manner & that livestock pens are suitable for public display.

**POLICY:** Livestock exhibitors are solely responsible for the care of their animals while on exhibit at the Lassen County Fair. If the Livestock Superintendent becomes aware of any livestock exhibit that is not being cared for in an ethical, humane manner, or situations where an acceptable state of pen cleanliness, as determined by the livestock management staff, is not being maintained, the following will occur:

1. The Livestock Superintendent will determine the name & affiliation of the responsible exhibitor.

2. A Red Tag, with the following information, will be affixed to the exhibitors pen:

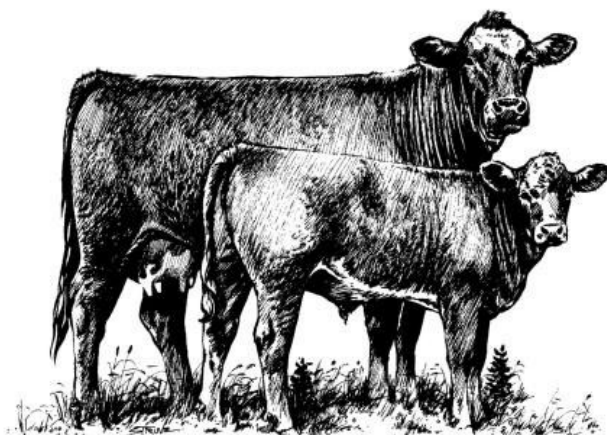
- a. The exhibitors name
- b. The observed problem
- c. The date & time of the citation
- d. Signature of the Livestock Superintendent

3. **It is the exhibitor's responsibility to respond to the Red Tag** by contacting the Livestock Superintendent within 12 hours of the citation being issued. The exhibitor will formulate & initiate a plan of correction approved by the Livestock Superintendent. Reasonable efforts will be made by the Livestock Superintendent **to contact the exhibitor's FFA advisor, 4-H Leader, Parent or Designee** & make aware of the situation resulting in the Red Tag citation.

4. Any Exhibitor failing to make contact with the Livestock Superintendent 12 hours may be issued an automatic second Red Tag Citation.

5. Any exhibitor receiving two Red Tag citations during the Fair will be declared ineligible for further competition, including participation in the Jr. Livestock Auction. The exhibitor will forfeit all fair premiums, awards earned & is required to remove the animal exhibit from the Fairgrounds.

6. Any exhibitor that is required, under the provisions of the Red Tag Policy, to remove their animal entry from the Fairgrounds, must do so within 12 hours from time of notification.



**“We Toss’em,  
They’re Awesome”<sup>®</sup>**

**PIZZA FACTORY<sup>®</sup>**

**Susanville**                      **Janesville**  
**530-257-0222**                      **530-253-3700**